

Mark your calendars!

February 3, 4, 5 & 6, 2009

DID YOU KNOW?

Stormwater regulations require that Stormwater Management Plans be prepared for construction sites that disrupt soil that are greater than one-acre in size. Attend this course to learn about the requirements of the stormwater regulations.

Tuesday, February 3rd — CDOT Erosion and Sediment Control: Stormwater Management During Construction

This entry-level, one day course is the certification course for the Colorado Department of Transportation (CDOT) Erosion Control Supervisor (ECS). This program has been developed for the Erosion Control Supervisor responsible for the proper installation, maintenance and inspection of Best Management Practices (BMPs) for the control of erosion and sedimentation at construction sites. \$75.00 by 1/19/09 \$100.00 thereafter

Wednesday, February 4th — Stormwater Management Plan Preparation Erosion Control EMP Installation & Auditing

The development and implementation of Stormwater Management Plans (SWMP) requires a carefully planned approach accompanied by close follow up. This one day training program is designed to provide information about how to prepare and implement these plans to help comply with the requirements of the CDPS permit as issued by the Colorado Department of Public Health and Environment (CDPHE), Water Quality Control Division (WQCD). This program is designed and intended to provide supporting training and information for the Erosion Control Supervisor. One-day course. See website for prerequisites. \$75.00 by 1/19/09 \$100.00 thereafter

Thursday, February 5th & Friday, February 6th — Conducting Stormwater Compliance Inspections

This 2-day training course has been developed for **compliance** inspectors of Best Management Practices (BMPs) used to control erosion and sedimentation during construction. Please note: this class is for compliance inspectors and does not cover how to complete a routine inspection as a requirement of the permit. The course covers; preparing for and conducting a comprehensive inspection of a CDPHE *Stormwater Discharges Associated with Construction Activity* permitted site. Specific features of this course will address topics to prepare inspectors for consistent inspection procedures and includes a half day field trip. The course is team taught with one instructor from Altitude Training Associates and one instructor from the Colorado Department of Public Health & Environment (CDPHE). See website for prerequisites. Space is limited to 22 participants for this course and only one person from any organization will be allowed to attend. \$225.00 for both days

For complete information and registration requirements, go to our website.

www.521drainageauthority.org

Space will fill quickly, register early!

- ◆ Three different courses to help meet your needs.
- ◆ Expand your construction stormwater knowledge and be prepared.
- ◆ Are your construction sites *really* prepared for a SWMP audit?

Visit our website for complete information and registration requirements.

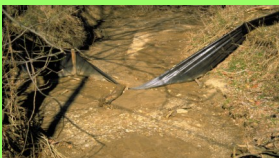
www.521drainageauthority.org

Or you may call Janice at the 5-2-1 Drainage Authority at (970) 263-7401 for more information.



5-2-1 Drainage Authority
P.O. Box 3389
Grand Junction, CO 81502

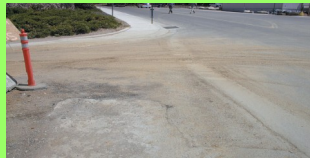
Does your construction silt fencing look more like this?



Or this?



Are your construction site BMPs controlling mud tracking like this?



Or this?

