





# WHY?

- Informative
- Persuasive
- Entertaining
- Inspirational

# WHAT?



# SPEECH STRUCTURE

- INTRODUCTION, BODY, CONCLUSION
- PAST, PRESENT, FUTURE
- PROS, CONS, RECOMMENDATION
- 3 MAIN POINTS (5 MAX)

RULE OF 3

## SPEECH STRUCTURE

- PROBLEM/SOLUTION
- CHRONOLOGICAL
- DIRECTION – FOLLOWS A PATH
- CAUSE AND EFFECT
- COMPARATIVE

## INTRODUCTIONS & CONCLUSIONS

### The 2013 Flood – A Historical Perspective February 27, 2014



### Flood Questions

- Who will pay for the recovery?
- What will happen with the moved rivers?
- Will we be better prepared next time?
- Was this the big one?

### Flood Questions

- Who will pay for the recovery?
- What will happen with the moved rivers?
- Will we be better prepared next time?

Was this the big one?

### Where Does This Flood Rank?

#### Damages

1. South Platte – 1965  
\$3 billion
2. **2013 Flood**  
**TBD, \$1.3 billion**
3. Pueblo – 1921  
\$1.1 billion
4. South Platte – 1973  
\$570 million
5. NE Colorado – 1997  
\$460 million

#### Deaths

1. Big Thompson – 1976  
144 Deaths
  2. Pueblo – 1921  
78 Deaths
  3. Bear Creek – 1896  
27 Deaths
  4. 1995 Floods  
21 Deaths
  5. Monument Creek – 1935  
18 Deaths
- Note: 2013 Flood – 10 Deaths**

## Was this the big one?

- ✦ In some cases, yes. In some cases, no.
- ✦ There is a historical basis for widespread, regional floods.
- ✦ There is a historical basis for >500-year floods. Even repeated ones in the same basin!
- ✦ This flood was anomalous for duration. It was also anomalous for timing in this location.
- ✦ Climate change and additional population pressures make future flood exposure higher.

## Do What's Right for Your Project

- Fence and fumigation help but are a continual hassle
- Anything short of total extermination does not work (BE REALISTIC)
- Consider mitigation options – mitigation credits? (~\$65K/acre)

## Conclusions

2013 UDFCD Annual Seminar

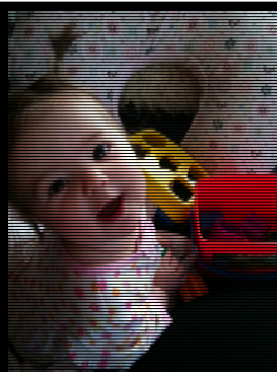
April 2, 2013



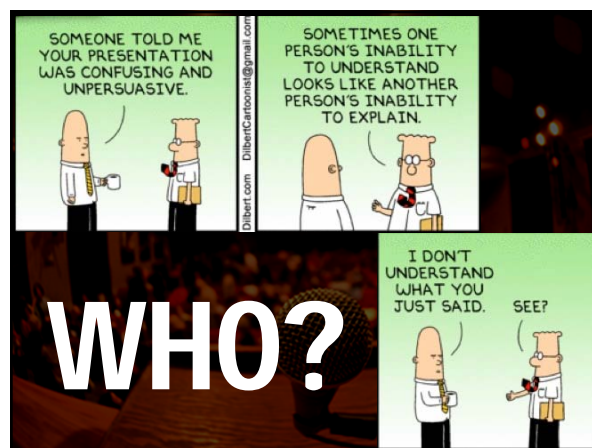
David J. Skuodas, [dskuodas@udfcd.org](mailto:dskuodas@udfcd.org)

2013 UDFCD Annual Seminar

April 2, 2013



# QUESTIONS?



# WHO?

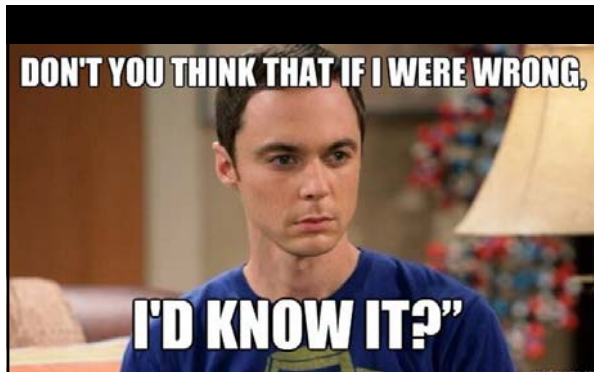




CO-WORKERS



PUBLIC



TECHNICAL STAFF



POLITICIANS



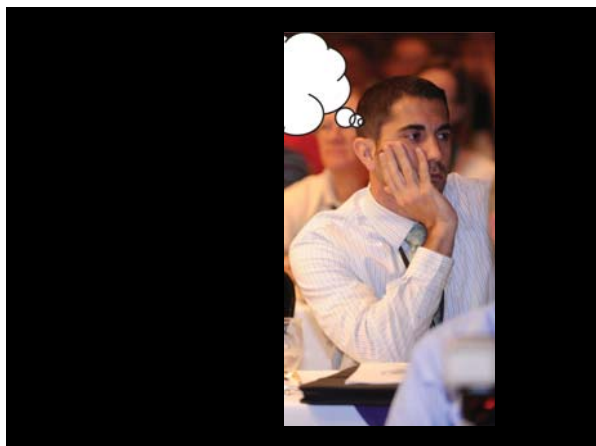


## Things We Learned the Hard Way

David Skuodas, Rich Borchardt, Bryan Kohlenberg, Barbara Chongtoua

2013 UDFCD Annual Seminar April 2, 2013





## When Someone Listens to You:

- 7% = the words you speak
- 38% = inflection
- 55% = facial expressions and body language

- Albert Mehrabian, Ph.D.  
Professor Emeritus of Psychology, UCLA

## VERBAL SKILLS

- VOLUME (use the microphone!)
- PITCH
- RATE
- AVOID TRANSITION WORDS

## PRACTICE!

## PAUSES

To understand why pauses are so important try to have a conversation with someone without pausing the other person wouldn't get a chance to say anything what do you think of that idea do you know someone at work who does that it can be really annoying...

## PAUSES

To understand why pauses are so important, try to have a conversation with someone without pausing. The other person wouldn't get a chance to say anything! What do you think of that idea? Do you know someone at work who does that? It can be really annoying!

## INFLECTION



*Dude.*  
- Budweiser Commercial

<http://www.youtube.com/watch?v=380juc47254>

## VERBAL EXERCISE

"I did not say he lost the keys."

"I did not say he lost the keys."

"I did not SAY he lost the keys."

"I did not say HE lost the keys."

"I did not say he LOST the keys."

"I did not say he lost the KEYS."

## NON-VERBAL SKILLS

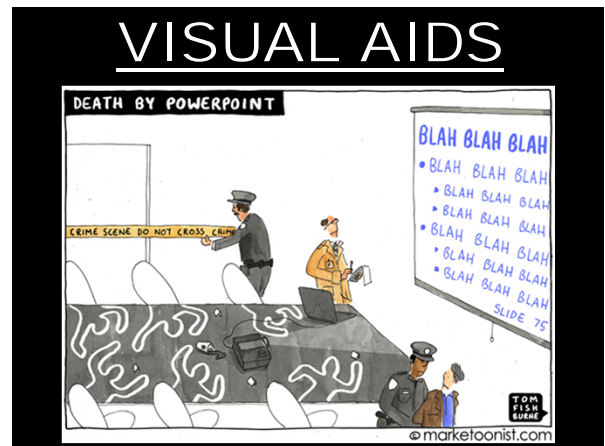
- STANCE
- MOVEMENT
- GESTURES
- FACIAL EXPRESSIONS
- EYE CONTACT

**PRACTICE!**



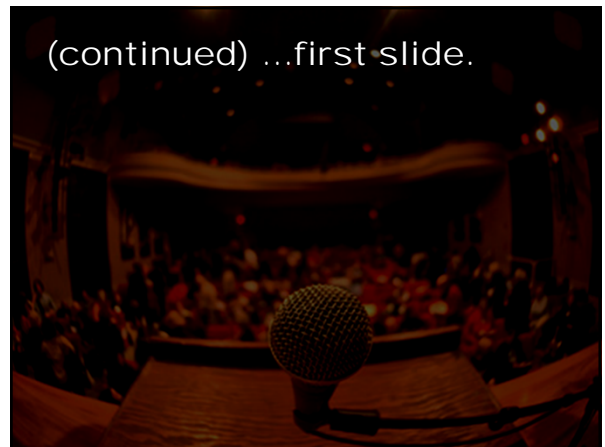
<http://www.youtube.com/watch?v=Ub1YI7LF3e8>





People tend to put every word they are going to say on their PowerPoint slides. Although this eliminates the need to memorize your talk, ultimately this makes your slides crowded, wordy, and boring. You will lose your audience's attention before you even reach the bottom of your...

(continued) ...first slide.



## UDFCD Mission Statement:

The Urban Drainage and Flood Control District works with local governments to address multi-jurisdictional drainage and flood control challenges in order to protect people, property, and the environment.

Many people do not use spell cheek before giving their presentation – BIG MISTAK! Nothing makes you look stupder than spelling errers.

- Avoid
- excessive
- bullet
- pointing.
- Only
- bullet
- key
- points.
- Too
- many
- bullet
- points
- and
- your
- key
- messages
- will
- not
- stand
- out.
- In
- fact,
- the
- term
- bullet
- point
- comes
- from
- people
- firing
- guns
- at
- annoying
- presenters.

## Focus Areas of the Challenge

- Build a Modeling Framework that allows users to link the watershed model of their choice to the receiving water model of their choice
- Include BMP performance algorithms that are practical and represent the water quality behavior of BMPs
- Include uncertainty in pollutant removal estimates for BMPs and resulting uncertainty in receiving water concentrations
- Include Decision Support Tools to help users evaluate the relative effectiveness of alternative stormwater management scenarios

## Focus Areas of the Challenge

- Build a [Modeling Framework](#) that allows users to link the watershed model of their choice to the receiving water model of their choice
- Include [BMP performance algorithms](#) that are practical and represent the water quality behavior of BMPs
- Include [uncertainty](#) in pollutant removal estimates for BMPs and resulting uncertainty in receiving water concentrations
- Include [Decision Support Tools](#) to help users evaluate the relative effectiveness of alternative stormwater management scenarios

## Focus Areas of the Challenge

- [Modeling Framework](#)
- [BMP performance](#)
- [Uncertainty](#)
- [Decision Support Tools](#)

## VERBAL SKILLS

- VOLUME (use the microphone!)
- PITCH
- RATE
- INFLECTION
- PAUSES
- AVOID TRANSITION WORDS

## VERBAL SKILLS

- VOLUME (use the microphone!)
- PITCH
- RATE
- INFLECTION
- PAUSES
- AVOID TRANSITION WORDS

## VERBAL SKILLS

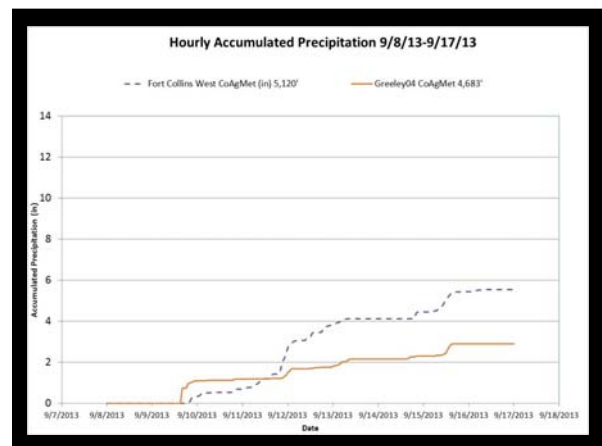
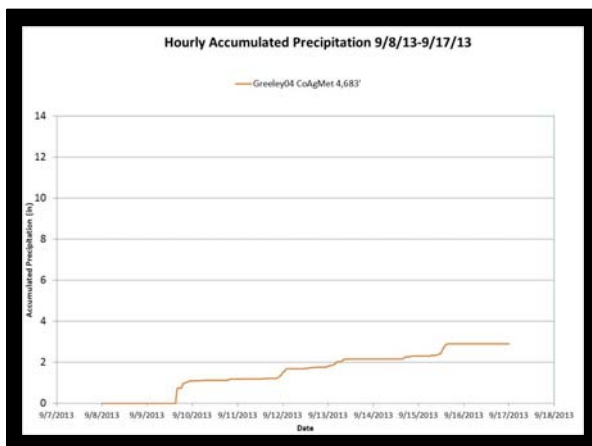
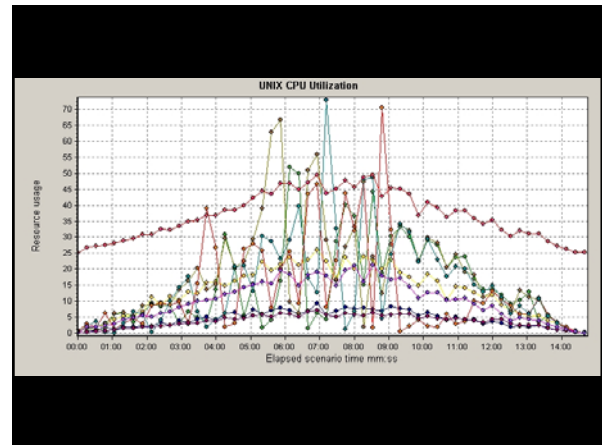
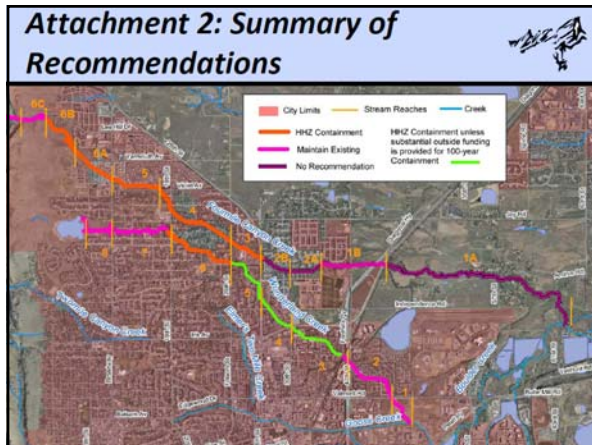
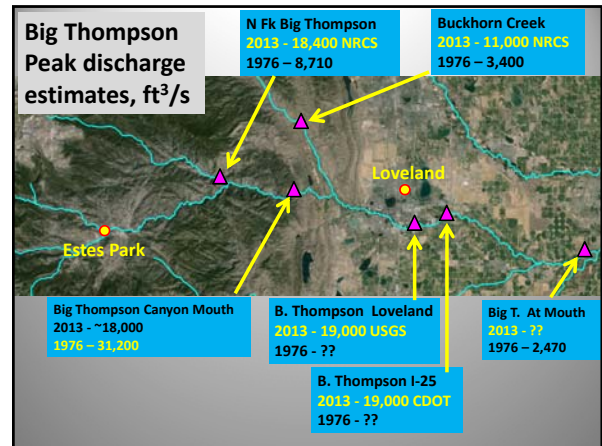
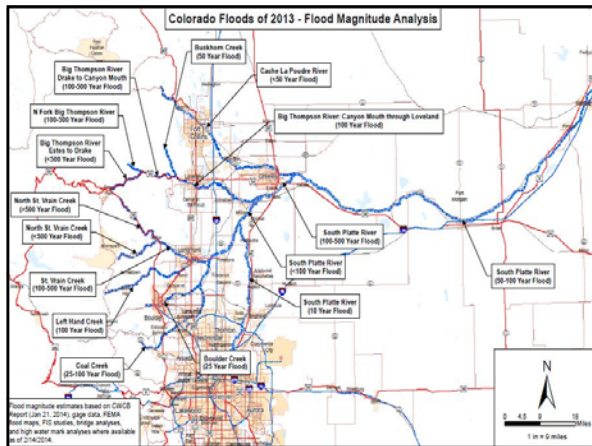
- VOLUME (use the microphone!)
- PITCH
- RATE
- INFLECTION
- PAUSES
- AVOID TRANSITION WORDS

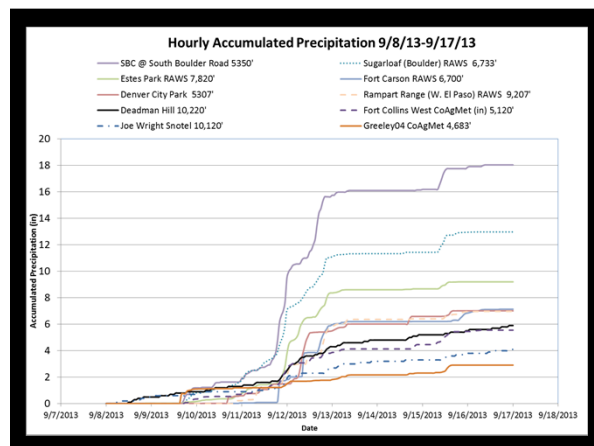
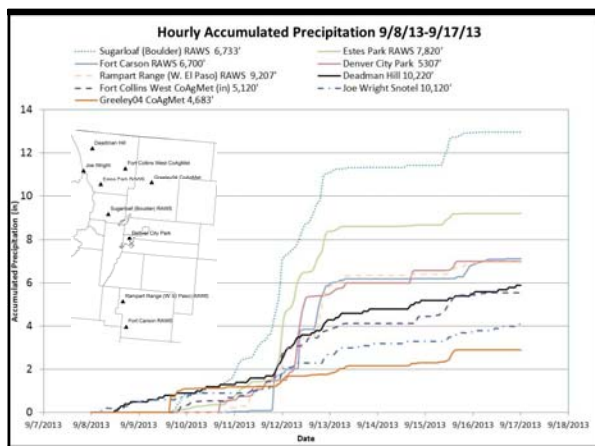
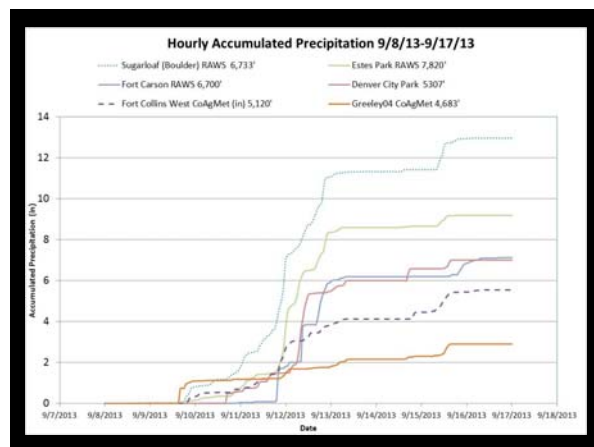
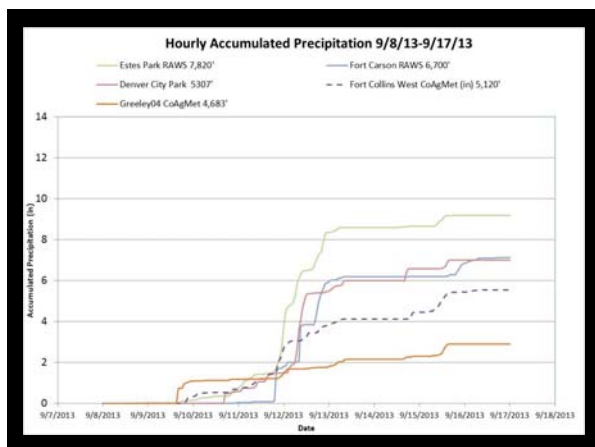
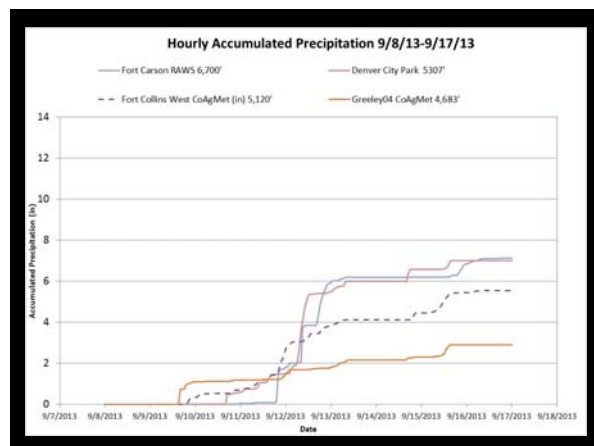
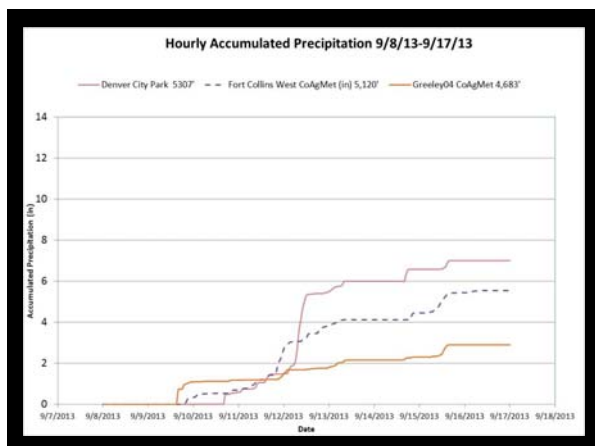
WOMEN IN THE  
WORKPLACE MAKE 80%  
THE SALARY OF MEN

80%









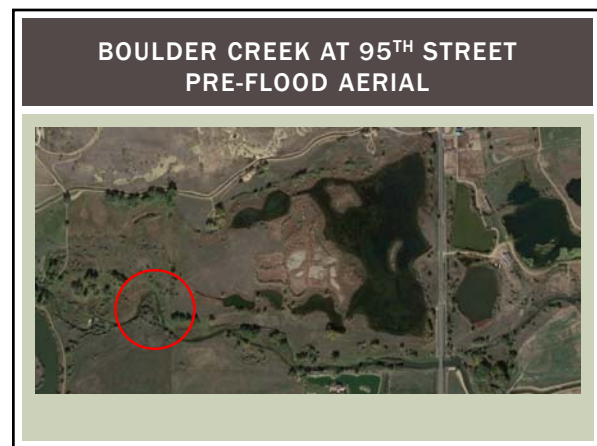
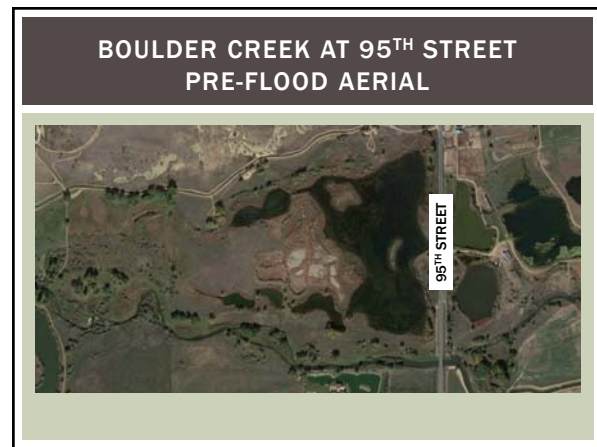
Boulder County Drainage Budgets - 1970/71 to 2010/11 (average flow: 181 cfs)											
Year	Flow	Location	Drainage	Area	Flow	Flow	Flow	Flow	Flow	Flow	Flow
1970/71	181	1970/71	1970/71	1970/71	1970/71	1970/71	1970/71	1970/71	1970/71	1970/71	1970/71
1971/72	181	1971/72	1971/72	1971/72	1971/72	1971/72	1971/72	1971/72	1971/72	1971/72	1971/72
1972/73	181	1972/73	1972/73	1972/73	1972/73	1972/73	1972/73	1972/73	1972/73	1972/73	1972/73
1973/74	181	1973/74	1973/74	1973/74	1973/74	1973/74	1973/74	1973/74	1973/74	1973/74	1973/74
1974/75	181	1974/75	1974/75	1974/75	1974/75	1974/75	1974/75	1974/75	1974/75	1974/75	1974/75
1975/76	181	1975/76	1975/76	1975/76	1975/76	1975/76	1975/76	1975/76	1975/76	1975/76	1975/76
1976/77	181	1976/77	1976/77	1976/77	1976/77	1976/77	1976/77	1976/77	1976/77	1976/77	1976/77
1977/78	181	1977/78	1977/78	1977/78	1977/78	1977/78	1977/78	1977/78	1977/78	1977/78	1977/78
1978/79	181	1978/79	1978/79	1978/79	1978/79	1978/79	1978/79	1978/79	1978/79	1978/79	1978/79
1979/80	181	1979/80	1979/80	1979/80	1979/80	1979/80	1979/80	1979/80	1979/80	1979/80	1979/80
1980/81	181	1980/81	1980/81	1980/81	1980/81	1980/81	1980/81	1980/81	1980/81	1980/81	1980/81
1981/82	181	1981/82	1981/82	1981/82	1981/82	1981/82	1981/82	1981/82	1981/82	1981/82	1981/82
1982/83	181	1982/83	1982/83	1982/83	1982/83	1982/83	1982/83	1982/83	1982/83	1982/83	1982/83
1983/84	181	1983/84	1983/84	1983/84	1983/84	1983/84	1983/84	1983/84	1983/84	1983/84	1983/84
1984/85	181	1984/85	1984/85	1984/85	1984/85	1984/85	1984/85	1984/85	1984/85	1984/85	1984/85
1985/86	181	1985/86	1985/86	1985/86	1985/86	1985/86	1985/86	1985/86	1985/86	1985/86	1985/86
1986/87	181	1986/87	1986/87	1986/87	1986/87	1986/87	1986/87	1986/87	1986/87	1986/87	1986/87
1987/88	181	1987/88	1987/88	1987/88	1987/88	1987/88	1987/88	1987/88	1987/88	1987/88	1987/88
1988/89	181	1988/89	1988/89	1988/89	1988/89	1988/89	1988/89	1988/89	1988/89	1988/89	1988/89
1989/90	181	1989/90	1989/90	1989/90	1989/90	1989/90	1989/90	1989/90	1989/90	1989/90	1989/90
1990/91	181	1990/91	1990/91	1990/91	1990/91	1990/91	1990/91	1990/91	1990/91	1990/91	1990/91
1991/92	181	1991/92	1991/92	1991/92	1991/92	1991/92	1991/92	1991/92	1991/92	1991/92	1991/92
1992/93	181	1992/93	1992/93	1992/93	1992/93	1992/93	1992/93	1992/93	1992/93	1992/93	1992/93
1993/94	181	1993/94	1993/94	1993/94	1993/94	1993/94	1993/94	1993/94	1993/94	1993/94	1993/94
1994/95	181	1994/95	1994/95	1994/95	1994/95	1994/95	1994/95	1994/95	1994/95	1994/95	1994/95
1995/96	181	1995/96	1995/96	1995/96	1995/96	1995/96	1995/96	1995/96	1995/96	1995/96	1995/96
1996/97	181	1996/97	1996/97	1996/97	1996/97	1996/97	1996/97	1996/97	1996/97	1996/97	1996/97
1997/98	181	1997/98	1997/98	1997/98	1997/98	1997/98	1997/98	1997/98	1997/98	1997/98	1997/98
1998/99	181	1998/99	1998/99	1998/99	1998/99	1998/99	1998/99	1998/99	1998/99	1998/99	1998/99
1999/00	181	1999/00	1999/00	1999/00	1999/00	1999/00	1999/00	1999/00	1999/00	1999/00	1999/00
2000/01	181	2000/01	2000/01	2000/01	2000/01	2000/01	2000/01	2000/01	2000/01	2000/01	2000/01
2001/02	181	2001/02	2001/02	2001/02	2001/02	2001/02	2001/02	2001/02	2001/02	2001/02	2001/02
2002/03	181	2002/03	2002/03	2002/03	2002/03	2002/03	2002/03	2002/03	2002/03	2002/03	2002/03
2003/04	181	2003/04	2003/04	2003/04	2003/04	2003/04	2003/04	2003/04	2003/04	2003/04	2003/04
2004/05	181	2004/05	2004/05	2004/05	2004/05	2004/05	2004/05	2004/05	2004/05	2004/05	2004/05
2005/06	181	2005/06	2005/06	2005/06	2005/06	2005/06	2005/06	2005/06	2005/06	2005/06	2005/06
2006/07	181	2006/07	2006/07	2006/07	2006/07	2006/07	2006/07	2006/07	2006/07	2006/07	2006/07
2007/08	181	2007/08	2007/08	2007/08	2007/08	2007/08	2007/08	2007/08	2007/08	2007/08	2007/08
2008/09	181	2008/09	2008/09	2008/09	2008/09	2008/09	2008/09	2008/09	2008/09	2008/09	2008/09
2009/10	181	2009/10	2009/10	2009/10	2009/10	2009/10	2009/10	2009/10	2009/10	2009/10	2009/10
2010/11	181	2010/11	2010/11	2010/11	2010/11	2010/11	2010/11	2010/11	2010/11	2010/11	2010/11

### LHV Spillway Rating Table

Table VI-1  
Spillway Discharge Table

Peak Spillway Flow During the September floods, 181 cfs

Reservoir Water Surface Elevation	Gage Height (ft)	Service Spillway Discharge (cfs)	Emergency Spillway Discharge (cfs)	Combined Spillway Discharge (cfs)
5,351	45	0	0	0
5,352	46	47	134	181
5,353	47	171	735	906
5,354	48	366	1,619	1,985
5,355	49	628	2,724	3,352
5,356	50	955	4,018	4,973
5,357	51	1,345	5,480	6,825
5,358	52	1,796	7,096	8,892
5,359	53	2,307	8,853	11,160
5,359.5	53.5	2,585	9,782	12,367





**BOULDER CREEK AT 95<sup>TH</sup> STREET  
PRE-FLOOD AERIAL**



**BOULDER CREEK AT 95<sup>TH</sup> STREET  
POST-FLOOD AERIAL**



**BOULDER CREEK AT 95<sup>TH</sup> STREET  
PRE-FLOOD AERIAL**



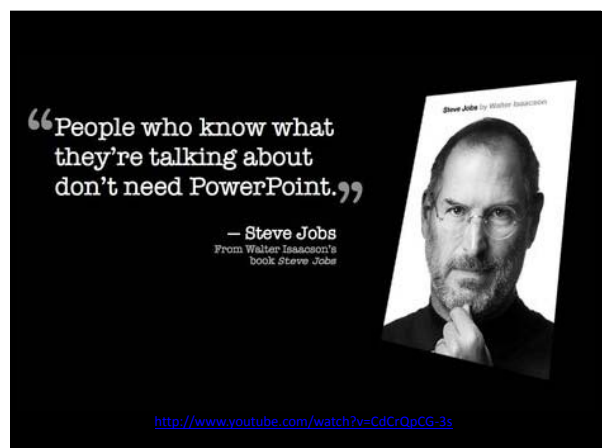
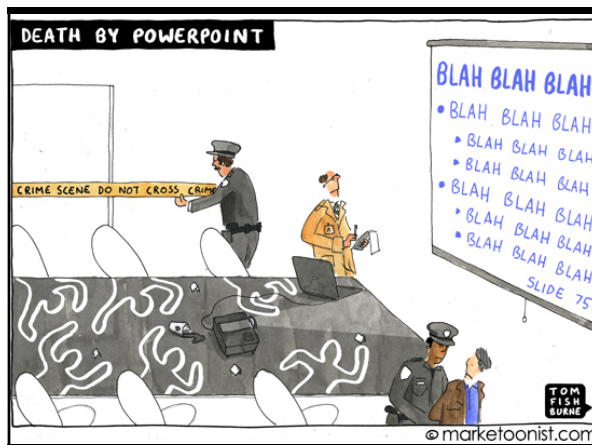
**BOULDER CREEK AT 95<sup>TH</sup> STREET  
POST-FLOOD AERIAL**



**BOULDER  
CREEK AT 95<sup>TH</sup>  
STREET**



**BOULDER  
CREEK AT 95<sup>TH</sup>  
STREET**



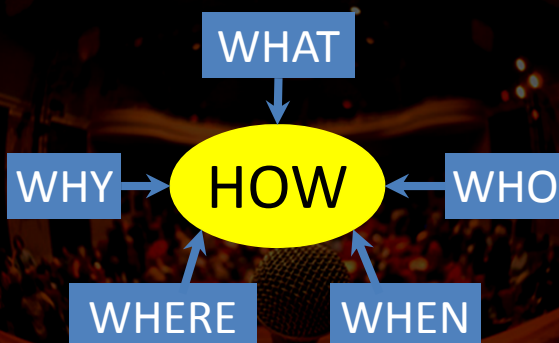
## WHAT IS MICROFINANCE?

- Usually small amounts of money
- Provided by small not for profit organizations through large banks
- Over 7,000 microfinance institutions
- Serves 16 million poor people in the developing world

## MICROFINANCE



## PREPARATION PRACTICE



**DALE CARNEGIE**

A talk is a voyage with a purpose, and it must be charted. The man who starts out going nowhere, generally gets there.